

MOSS Soluble HRP Substrates



MOSS Soluble HRP Substrates

- Liquid mixtures of chemicals
- Used for medical testing
- Designed for specific enzymes
- Substrates undergo a change when used with enzyme conjugates to test a patient sample



MOSS Soluble HRP Substrates

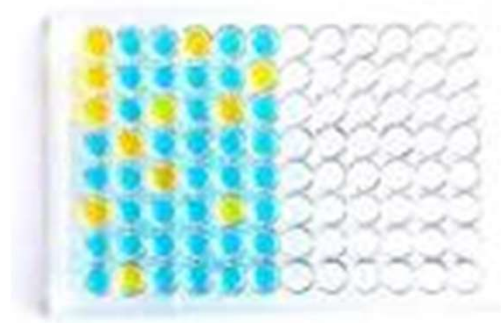
Limit of Detection in a Homogenous Assay

Enzyme	Product	Detection	Detection Limit
HRP	ABTS	415 nm Green	9 pg/well
HRP	TMBE-S	650 nm Blue, 450 nm Gold	4 pg/well
AP	NPPD	405 nm Yellow	2 pg/well
HRP	TMBE	650 nm Blue, 450 nm Gold	1 pg/well
HRP	TMBUS	650 nm Blue, 450 nm Gold	0.8 pg/well
HRP	TMBHK	650 nm Blue, 450 nm Gold	0.3 pg/well
HRP	ChemiHRP	Light Emission	0.18 pg/well
AP	ChemiAP	Light Emission	0.04 pg/well

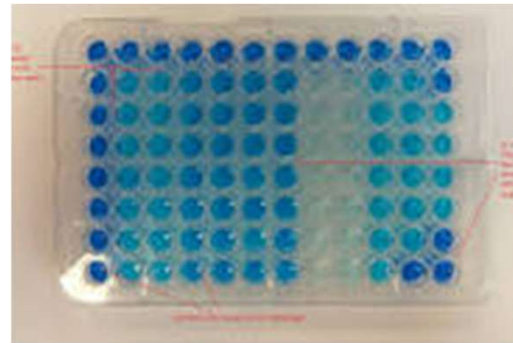


MOSS Soluble HRP Substrates

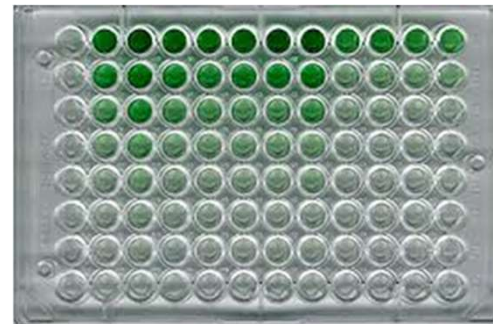
- TMB Blue and Gold



- TMB Blue

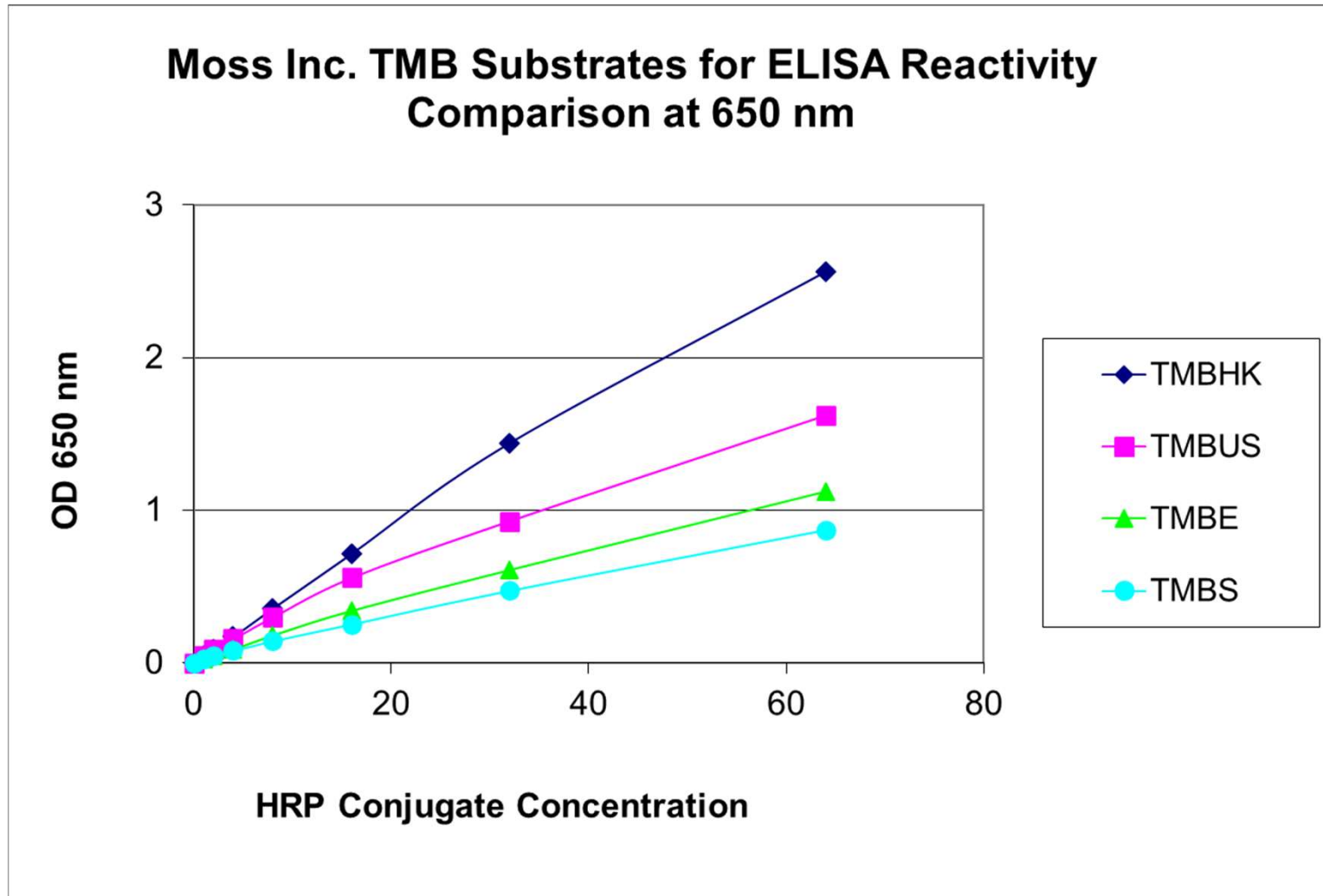


- ABTS Green



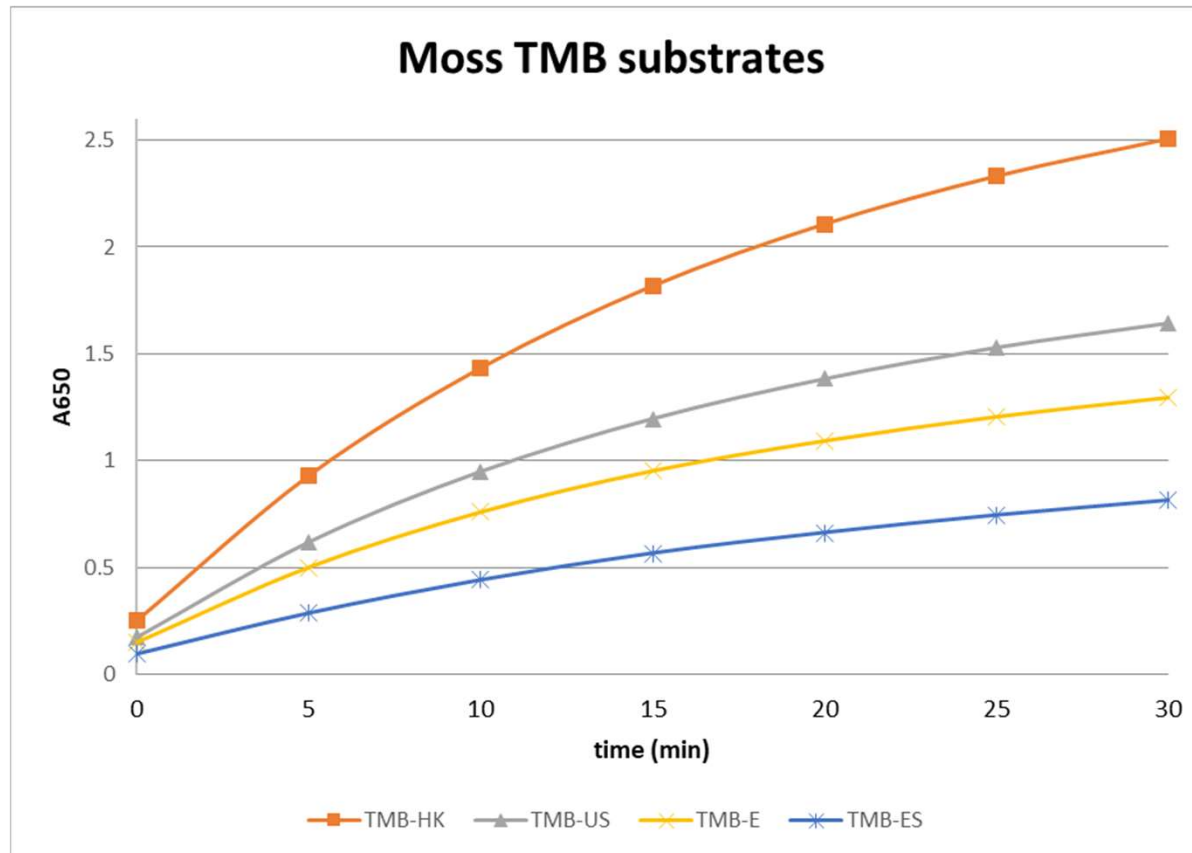


MOSS Soluble HRP Substrates





MOSS Soluble HRP Substrates





MOSS Inc. Enzyme Substrates

Stop Reagents for ELISA Substrates

- Stop reagents are acids, bases, detergents, or ions
- They stop color development so that an analyte can be accurately measured
- The stop reagent freezes or destroys the enzyme

Stop Reagent	Substrate	Active Agent	Stopped Color
Stop 650	TMB	Sodium Fluoride	Blue
Detergent	TMB	SDS	Blue
Universal Stop	TMB	Maleic Acid	Gold
Acid	TMB	Sulfuric Acid	Gold
Acid	TMB	Hydrochloric Acid	Gold
Acid	ABTS	Oxalic	Green
Base	NPPD, PNPP	Sodium Hydroxide	Yellow



MOSS Soluble HRP Substrates

